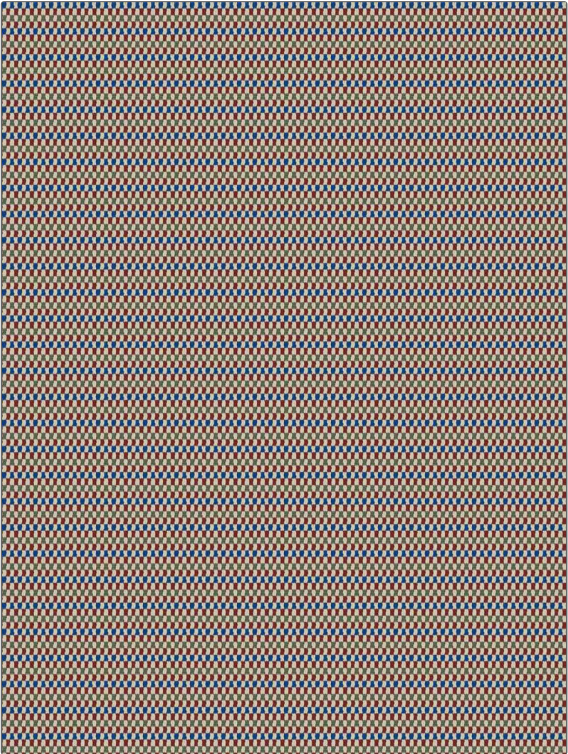


# Product Details

**PATTERN** OD Mondello  
**COLOR** Red / Blue

<b>BRAND</b>	<b>APPLICATION</b>
Clarence House	Fabric
<b>USES</b>	<b>CATEGORIES</b>
Upholstery	Outdoor, Washable, Wovens
<b>BOOK</b>	<b>COLORS</b>
Les Tropicaux	Blue, Pink
<b>DESIGN TYPES</b>	<b>SCALE</b>
Small Scale Woven, Stripes	Small
<b>RAILROADED</b>	
Not Railroaded	



<b>WIDTH</b>	<b>VERTICAL REPEAT</b>	<b>HORIZONTAL REPEAT</b>	<b>CONTENT</b>
55.00 in (139.70 cm)	0.70 in (1.78 cm)	0.50 in (1.27 cm)	100% Polypropylene
<b>BACKING</b>	<b>FIRE CODES</b>	<b>DOUBLE RUBS</b>	<b>PRODUCT NUMBER</b>
	UFAC Class I / NFPA 260	Exceeds 45,000 Double Rubs (Wyzenbeek Method)	8373902
<b>DATE BOOKED</b>	<b>COUNTRY</b>	<b>CLEANING CODES</b>	
06/2022	Italy	WASHABLE	

**ADDITIONAL PRODUCT NOTES**  
 Passes 60,000 Martindale Tst, Indoor / Outdoor, 1,500 Hours Light Fastness, Ca Tb 117-2013, Do Not Dry Clean, Washable