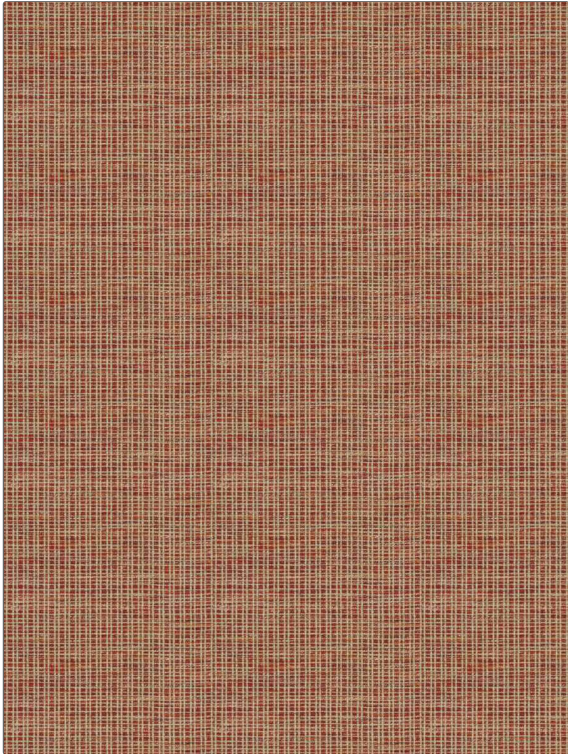


Product Details

**PATTERN** Amata  
**COLOR** Poppyfield

<b>BRAND</b>	<b>APPLICATION</b>
Clarence House	Fabric
<b>USES</b>	<b>CATEGORIES</b>
Upholstery	Wovens
<b>BOOK</b>	<b>COLORS</b>
Clarence House Spring 2021	Orange / Spice, Pink, Red
<b>DESIGN TYPES</b>	<b>SCALE</b>
Check / Plaid	Small
<b>RAILROADED</b>	
Not Railroaded	



<b>WIDTH</b>	<b>VERTICAL REPEAT</b>	<b>HORIZONTAL REPEAT</b>	<b>CONTENT</b>
55.00 in (139.70 cm)	0.50 in (1.27 cm)	0.20 in (0.51 cm)	60% Cotton, 40% Wool
<b>BACKING</b>	<b>FIRE CODES</b>	<b>DOUBLE RUBS</b>	<b>PRODUCT NUMBER</b>
	Cal Tb 117-2013, UFAC Class I / NFPA 260	Exceeds 51,000 Double Rubs (Wyzenbeek Method)	4184506
<b>DATE BOOKED</b>	<b>COUNTRY</b>	<b>CLEANING CODES</b>	
02/2021	Italy	S	

**ADDITIONAL PRODUCT NOTES**

---

Exclusive Pattern