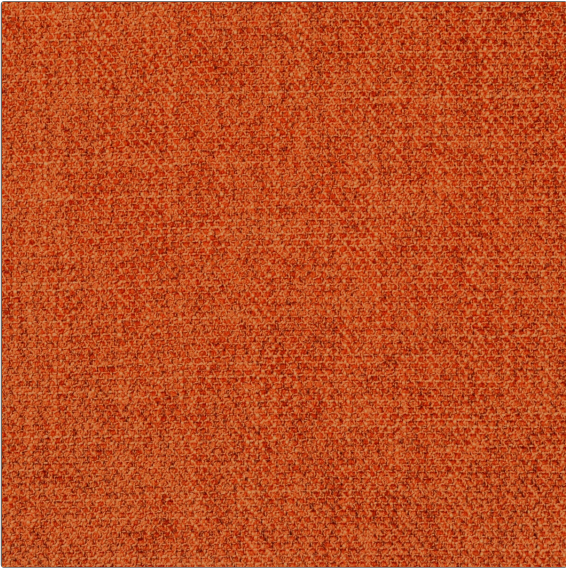


Product Details

PATTERN **Cutler Tweed**
COLOR **Koi**



BRAND	APPLICATION
Clarence House	Fabric
USES	CATEGORIES
Drapery, Multipurpose, Upholstery	Textures, Wovens
COLORS	DESIGN TYPES
Orange / Spice	Solid, Texture Plain
RAILOADED	
Not Railroaded	

WIDTH	FINISH	VERTICAL REPEAT	HORIZONTAL REPEAT
55.00 in (139.70 cm)	Nanotex	0.00 in (0.00 cm)	0.00 in (0.00 cm)
CONTENT	BACKING	DOUBLE RUBS	PRODUCT NUMBER
100% Polyester		Exceeds 15,000 Double Rubs (Wyzenbeek Method)	1890826
COUNTRY			
China			

ADDITIONAL PRODUCT NOTES

Nanotex, Pfas-Free, Dry Clean Only