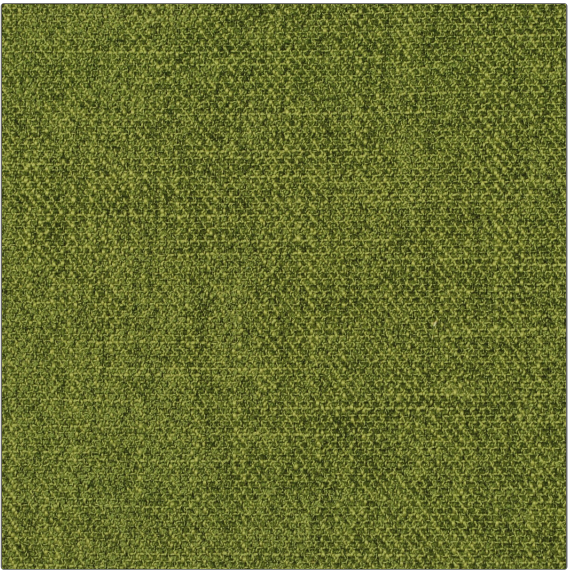


Product Details

PATTERN	Cutler Tweed
COLOR	Dill

BRAND	APPLICATION
Clarence House	Fabric
USES	CATEGORIES
Drapery, Multipurpose, Upholstery	Textures, Wovens
COLORS	DESIGN TYPES
Green	Solid, Texture Plain
RAILROADED	
Not Railroaded	



WIDTH	FINISH	VERTICAL REPEAT	HORIZONTAL REPEAT
55.00 in (139.70 cm)	Nanotex	0.00 in (0.00 cm)	0.00 in (0.00 cm)
CONTENT	BACKING	DOUBLE RUBS	PRODUCT NUMBER
100% Polyester		Exceeds 15,000 Double Rubs (Wyzenbeek Method)	1890811
COUNTRY			
China			

ADDITIONAL PRODUCT NOTES
Nanotex, Pfas-Free, Dry Clean Only