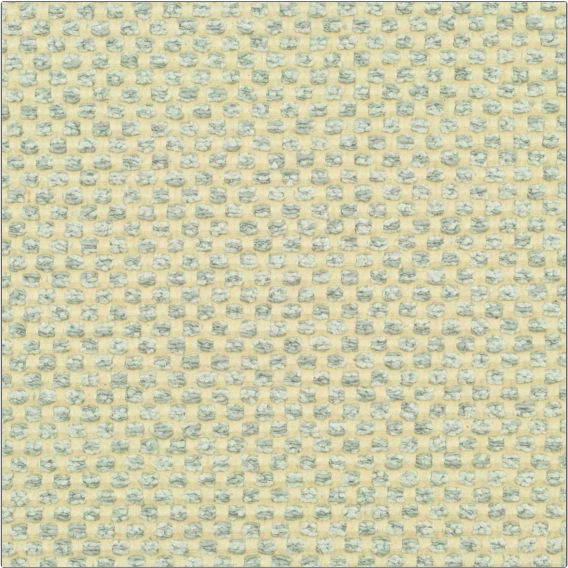


Product Details

PATTERN **Dottie**
COLOR **Mineral**



| | |
|-----------------------|-----------------------|
| BRAND | APPLICATION |
| Clarence House | Fabric |
| USES | CATEGORIES |
| Upholstery | Wovens |
| COLORS | DESIGN TYPES |
| Light Blue | Texture Plain |
| SCALE | RAILROADED |
| Small | Not Railroaded |

| | | | |
|-----------------------------|-----------------------------------|--------------------------|--|
| WIDTH | VERTICAL REPEAT | HORIZONTAL REPEAT | CONTENT |
| 52.00 in (132.08 cm) | 0.50 in (1.27 cm) | 0.37 in (0.94 cm) | 67% Cotton, 27% Viscose, 6% Polyamide |
| BACKING | DOUBLE RUBS | PRODUCT NUMBER | COUNTRY |
| | Exceeds 30,000 Double Rubs | 1890203 | Belgium |

ADDITIONAL PRODUCT NOTES
Passes 30,000 Martindale Tst, Dry Clean Only