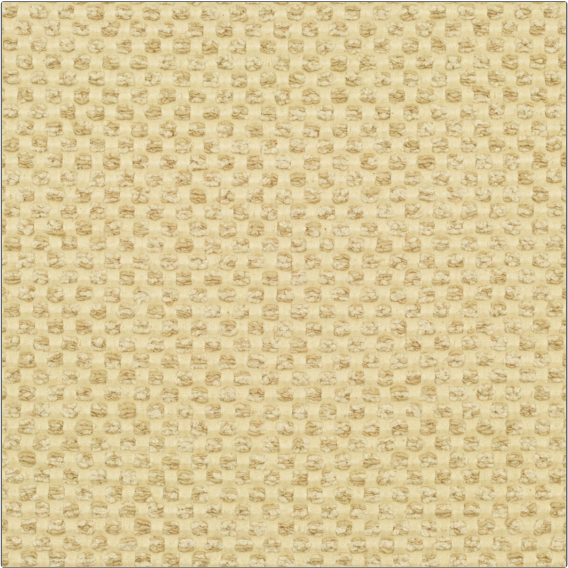


Product Details

PATTERN Dottie
COLOR Vanilla



BRAND	APPLICATION
Clarence House	Fabric
USES	CATEGORIES
Upholstery	Wovens
COLORS	DESIGN TYPES
Off White / Ivory	Texture Plain
SCALE	RAILROADED
Small	Not Railroaded

WIDTH	VERTICAL REPEAT	HORIZONTAL REPEAT	CONTENT
52.00 in (132.08 cm)	0.50 in (1.27 cm)	0.37 in (0.94 cm)	67% Cotton, 27% Viscose, 6% Polyamide
BACKING	DOUBLE RUBS	PRODUCT NUMBER	COUNTRY
	Exceeds 30,000 Double Rubs	1890201	Belgium

ADDITIONAL PRODUCT NOTES

Passes 30,000 Martindale Tst, Dry Clean Only