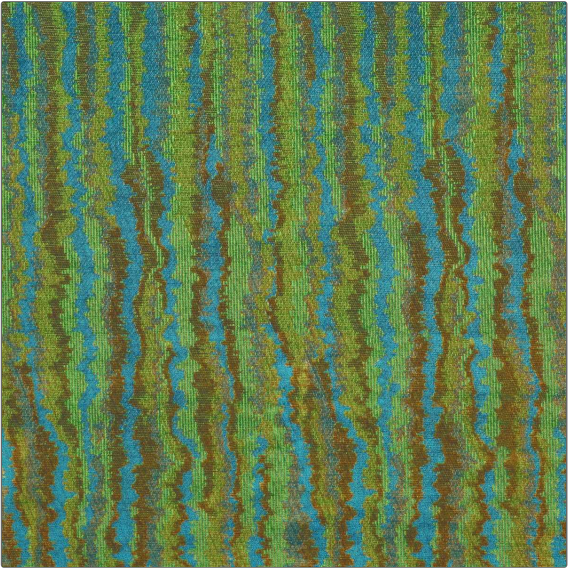


Product Details

PATTERN Borealis
COLOR Emerald Green



| | |
|-----------------------------------|----------------------------|
| BRAND | APPLICATION |
| Clarence House | Fabric |
| USES | CATEGORIES |
| Drapery, Multipurpose, Upholstery | Velvet / Grospoint, Wovens |
| COLORS | DESIGN TYPES |
| Green | Chevron, Abstract |
| SCALE | RAILROADED |
| Large | Not Railroaded |

| | | | |
|----------------------|---|--------------------------|---|
| WIDTH | VERTICAL REPEAT | HORIZONTAL REPEAT | CONTENT |
| 52.00 in (132.08 cm) | 32.00 in (81.28 cm) | 13.25 in (33.66 cm) | Polyester: 100% Viscose, Viscose: 100% Cotton |
| BACKING | DOUBLE RUBS | PRODUCT NUMBER | COUNTRY |
| | Exceeds 30,000 Double Rubs (Wyzenbeek Method) | 1889902 | India |

ADDITIONAL PRODUCT NOTES

Passes 30,000 Martindale Tst, Dry Clean Only, Refer To Image Under Sample