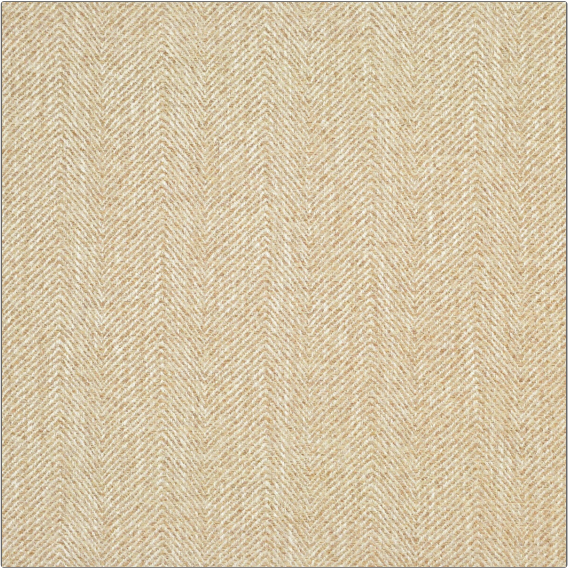


Product Details

PATTERN	Corsica
COLOR	Sand

BRAND	APPLICATION
Clarence House	Fabric
USES	CATEGORIES
Drapery, Multipurpose, Upholstery	Textures, Wovens
COLORS	DESIGN TYPES
Beige	Herringbone
SCALE	RAILOADED
Small	Not Railed



WIDTH	VERTICAL REPEAT	HORIZONTAL REPEAT	CONTENT
55.00 in (139.70 cm)	0.25 in (0.64 cm)	3.50 in (8.89 cm)	60% Viscose, 23% Polyester, 15% Cotton, 2% Linen
BACKING	DOUBLE RUBS	PRODUCT NUMBER	COUNTRY
	Exceeds 38,000 Double Rubs (Wyzenbeek Method)	1880501	Turkey

ADDITIONAL PRODUCT NOTES
Passes 38,000 Martindale Tst, Dry Clean Only