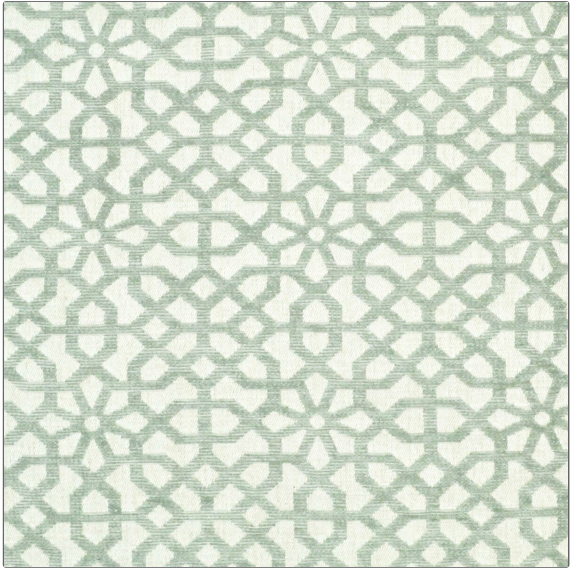


Product Details

PATTERN **Keystone**
COLOR **Celadon**



BRAND	APPLICATION
Clarence House	Fabric
USES	CATEGORIES
Drapery, Multipurpose, Upholstery	Textures, Wovens
COLORS	DESIGN TYPES
Green, Light Green	Geometric, Lattice / Fretwork
SCALE	RAILROADED
Small	Not Railroaded

WIDTH	VERTICAL REPEAT	HORIZONTAL REPEAT	CONTENT
54.00 in (137.16 cm)	5.62 in (14.27 cm)	6.75 in (17.14 cm)	40% Linen, 28% Viscose, 26% Cotton, 6% Polyester
BACKING	DOUBLE RUBS	PRODUCT NUMBER	COUNTRY
	Exceeds 27,000 Double Rubs (Wyzenbeek Method)	1879012	Italy

ADDITIONAL PRODUCT NOTES

Passes 27,000 Martindale Tst, Dry Clean Only