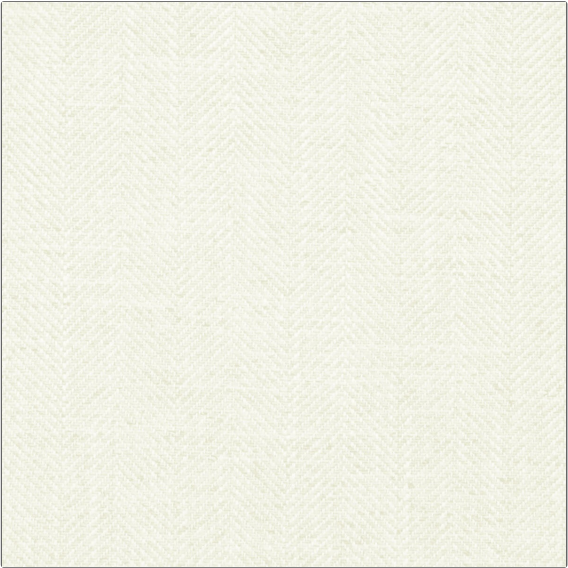


Product Details

PATTERN **Coventry Chevron**  
COLOR **White**



BRAND	APPLICATION
Clarence House	Fabric
USES	CATEGORIES
Drapery, Multipurpose, Upholstery	Textures, Wovens
COLORS	DESIGN TYPES
White	Herringbone
SCALE	RAILROADED
Small	Not Railroaded

WIDTH	VERTICAL REPEAT	HORIZONTAL REPEAT	CONTENT
54.00 in (137.16 cm)	0.00 in (0.00 cm)	1.87 in (4.75 cm)	46% Viscose, 27% Linen, 12% Cotton, 11% Polyester, 4% Acrylic
BACKING	DOUBLE RUBS	PRODUCT NUMBER	COUNTRY
	Exceeds 20,000 Double Rubs (Wyzenbeek Method)	1851801	Italy

ADDITIONAL PRODUCT NOTES  
Passes 20,000 Martindale Tst, Dry Clean Only