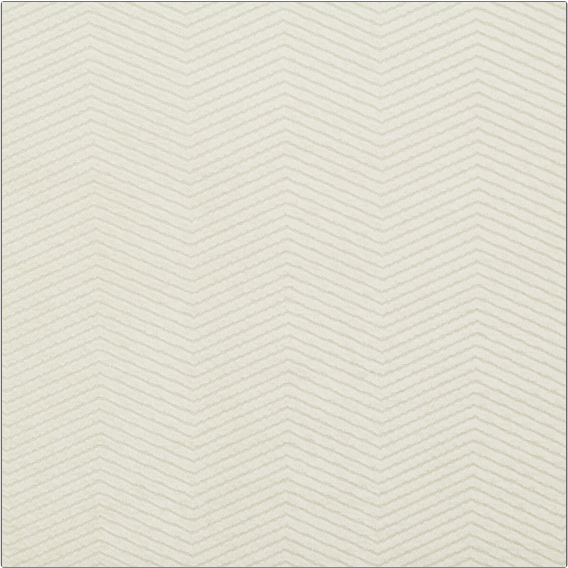


Product Details

PATTERN	Trevi Chenille		
COLOR	Ivory		
BRAND	CLARENCE HOUSE		
APPLICATION	Fabric		
USES	Multipurpose, Upholstery		
CATEGORIES	Wovens, Chenille		
COLORS	Off White / Ivory		
DESIGN TYPES	Herringbone, Chevron, Contemporary / Modern		
SCALE	Small		
RAILROADED	Not Railroaded		



WIDTH	VERTICAL REPEAT	HORIZONTAL REPEAT	CONTENT
54.00 in (137.16 cm)	0.00 in (0.00 cm)	4.50 in (11.43 cm)	48% Viscose, 32% Cotton, 20% Polyester
BACKING	DOUBLE RUBS	PRODUCT NUMBER	COUNTRY
	Exceeds 28,000 Double Rubs (Wyzenbeek Method)	1848101	Italy

ADDITIONAL PRODUCT NOTES
Passes 28,000 Martindale Tst, Dry Clean Only