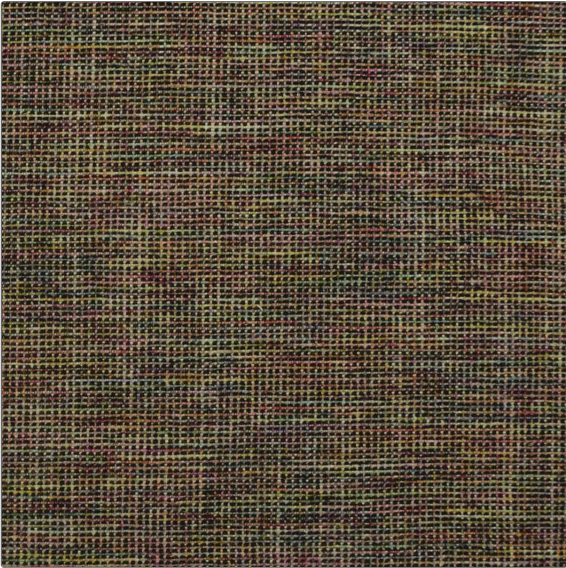


Product Details

PATTERN	Godiva
COLOR	Black Multi
BRAND	APPLICATION
Clarence House	Fabric
USES	CATEGORIES
Multipurpose, Upholstery	Textures, Wovens
COLORS	DESIGN TYPES
Burgundy	Texture Plain
RAILROADED	
Not Railroaded	



WIDTH	VERTICAL REPEAT	HORIZONTAL REPEAT	CONTENT
54.00 in (137.16 cm)	0.00 in (0.00 cm)	0.00 in (0.00 cm)	75% Viscose, 12% Linen, 7% Cotton, 6% Polyester
BACKING	DOUBLE RUBS	PRODUCT NUMBER	COUNTRY
	Exceeds 30,000 Double Rubs (Wyzenbeek Method)	1840004	Italy

ADDITIONAL PRODUCT NOTES
Passes 30,000 Martindale Tst, Exclusive Pattern, Dry Clean Only