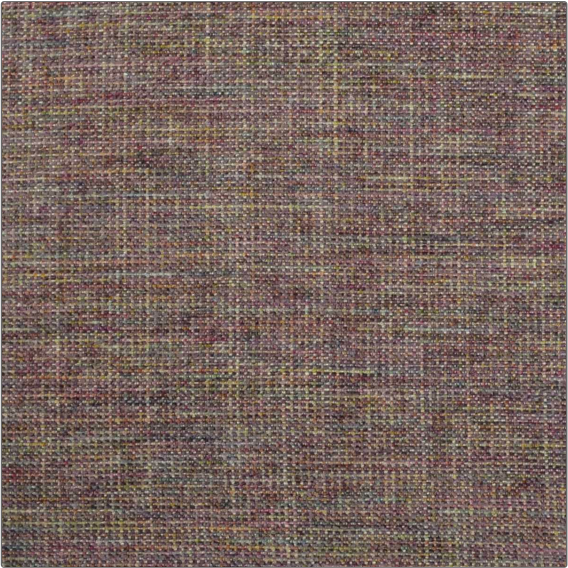


Product Details

PATTERN	Godiva
COLOR	Eggplant Multi

BRAND	APPLICATION
Clarence House	Fabric
USES	CATEGORIES
Multipurpose, Upholstery	Textures, Wovens
COLORS	DESIGN TYPES
Lavender / Purple	Texture Plain
RAILOADED	
Not Railroaded	



WIDTH	VERTICAL REPEAT	HORIZONTAL REPEAT	CONTENT
54.00 in (137.16 cm)	0.00 in (0.00 cm)	0.00 in (0.00 cm)	75% Viscose, 12% Linen, 7% Cotton, 6% Polyester
BACKING	DOUBLE RUBS	PRODUCT NUMBER	COUNTRY
	Exceeds 30,000 Double Rubs (Wyzenbeek Method)	1840002	Italy

ADDITIONAL PRODUCT NOTES
Passes 30,000 Martindale Tst, Exclusive Pattern, Dry Clean Only