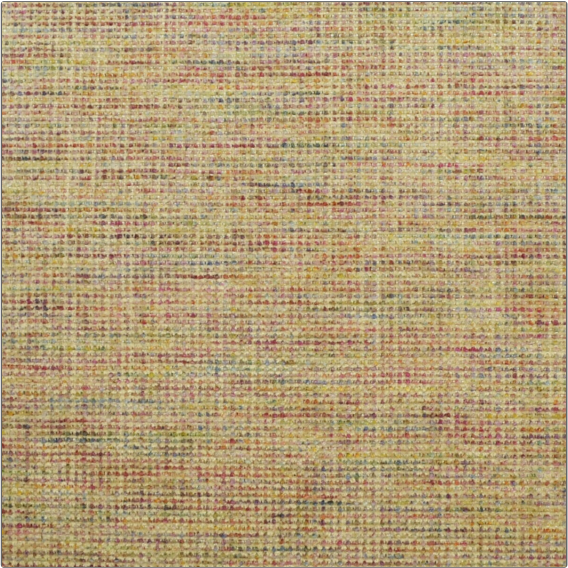


Product Details

PATTERN	Godiva
COLOR	Sand Multi
BRAND	APPLICATION
Clarence House	Fabric
USES	CATEGORIES
Multipurpose, Upholstery	Textures, Wovens
COLORS	DESIGN TYPES
Beige	Texture Plain
RAILOADED	
Not Railed	



WIDTH	VERTICAL REPEAT	HORIZONTAL REPEAT	CONTENT
54.00 in (137.16 cm)	0.00 in (0.00 cm)	0.00 in (0.00 cm)	75% Viscose, 12% Linen, 7% Cotton, 6% Polyester
BACKING	DOUBLE RUBS	PRODUCT NUMBER	COUNTRY
	Exceeds 30,000 Double Rubs (Wyzenbeek Method)	1840001	Italy

ADDITIONAL PRODUCT NOTES
Passes 30,000 Martindale Tst, Exclusive Pattern, Dry Clean Only