

Product Details

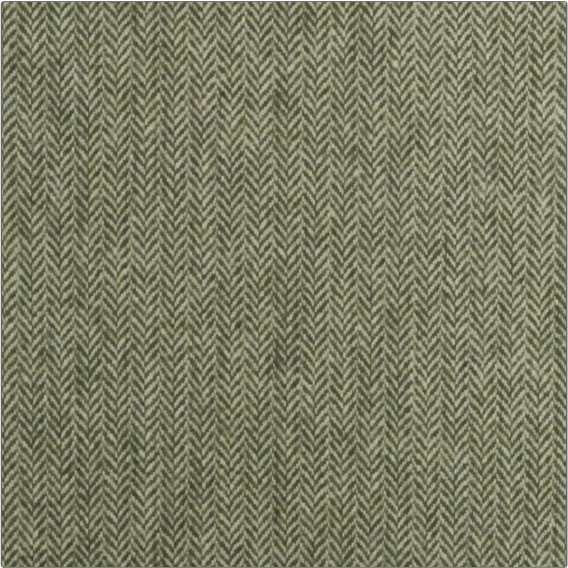
PATTERN **Holmes**
COLOR **Olive**

BRAND **Clarence House**
APPLICATION **Fabric**

USES **Drapery, Multipurpose, Upholstery**
CATEGORIES **Wovens**

COLORS **Green**
DESIGN TYPES **Herringbone, Texture Plain, Contemporary / Modern**

RAILROADED
Not Railroaded



WIDTH	VERTICAL REPEAT	HORIZONTAL REPEAT	CONTENT
54.00 in (137.16 cm)	0.00 in (0.00 cm)	0.00 in (0.00 cm)	45% Acrylic, 25% Polyester, 30% Wool
BACKING	DOUBLE RUBS	PRODUCT NUMBER	COUNTRY
	Exceeds 25,000 Double Rubs (Wyzenbeek Method)	1835502	Italy

ADDITIONAL PRODUCT NOTES
Passes 25,000 Martindale Tst, Dry Clean Only