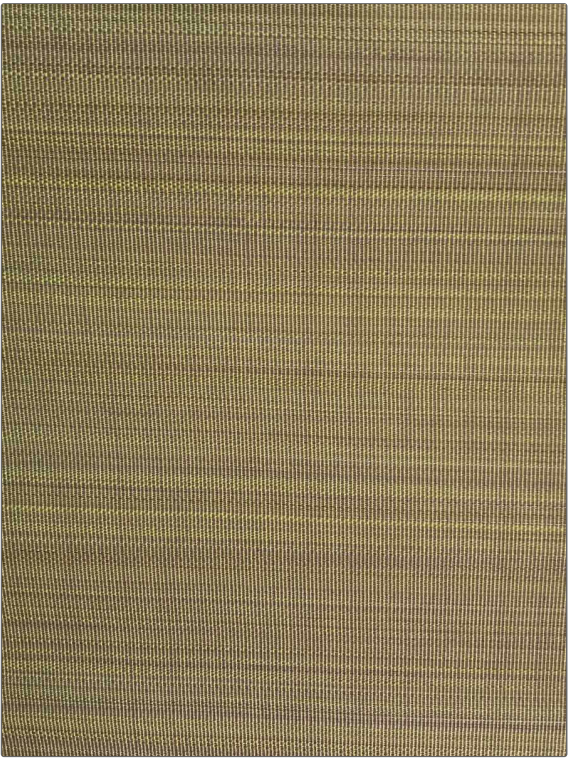


Product Details

PATTERN **Paso 1**
COLOR **Chartreuse / Violet**

BRAND	APPLICATION
Clarence House	Fabric
USES	CATEGORIES
Upholstery	Wovens
BOOK	COLORS
John Boyd	Lavender / Purple, Green
DESIGN TYPES	SCALE
Stripes	Small
RAILROADED	
Not Railroaded	



WIDTH	VERTICAL REPEAT	HORIZONTAL REPEAT	CONTENT
22.00 in (55.88 cm)	0.00 in (0.00 cm)	0.00 in (0.00 cm)	68% Horsehair, 32% Cotton
BACKING	DOUBLE RUBS	PRODUCT NUMBER	DATE BOOKED
	Exceeds 50,000 Double Rubs	1745419	10/2023
COUNTRY	CLEANING CODES		
United Kingdom	S		

ADDITIONAL PRODUCT NOTES

Passes 50,000 Martindale Tst, Natural Fibers, Are Not Guaranteed For, Color Matching, Color, Fastness Or Durability.