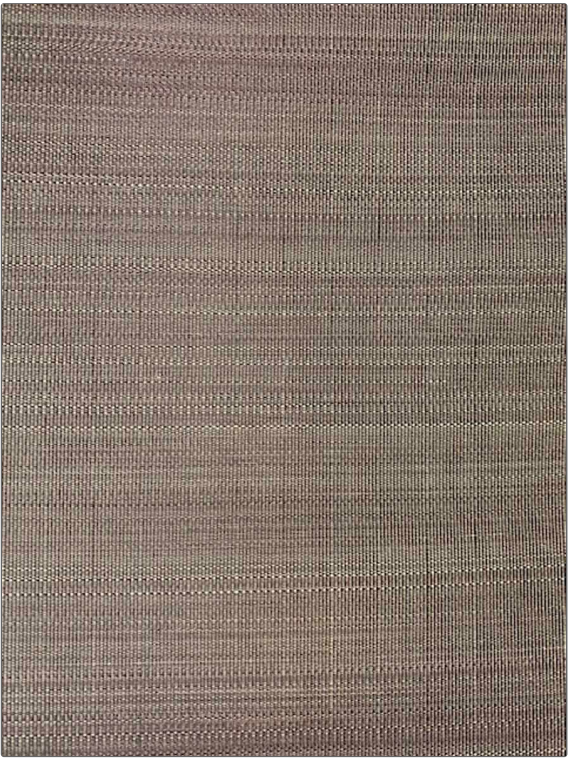


Product Details

PATTERN **Paso 1**  
COLOR **Dark Mushroom**

|                |             |
|----------------|-------------|
| BRAND          | APPLICATION |
| Clarence House | Fabric      |
| USES           | CATEGORIES  |
| Upholstery     | Wovens      |
| BOOK           | COLORS      |
| John Boyd      | Taupe / Tan |
| DESIGN TYPES   | SCALE       |
| Stripes        | Small       |
| RAILOADED      |             |
| Not Railroaded |             |



|                     |                            |                   |                           |
|---------------------|----------------------------|-------------------|---------------------------|
| WIDTH               | VERTICAL REPEAT            | HORIZONTAL REPEAT | CONTENT                   |
| 22.00 in (55.88 cm) | 0.00 in (0.00 cm)          | 0.00 in (0.00 cm) | 68% Horsehair, 32% Cotton |
| BACKING             | DOUBLE RUBS                | PRODUCT NUMBER    | DATE BOOKED               |
|                     | Exceeds 50,000 Double Rubs | 1745412           | 10/2023                   |
| COUNTRY             | CLEANING CODES             |                   |                           |
| United Kingdom      | S                          |                   |                           |

ADDITIONAL PRODUCT NOTES

Passes 50,000 Martindale Tst, Natural Fibers, Are Not Guaranteed For, Color Matching, Color, Fastness Or Durability.