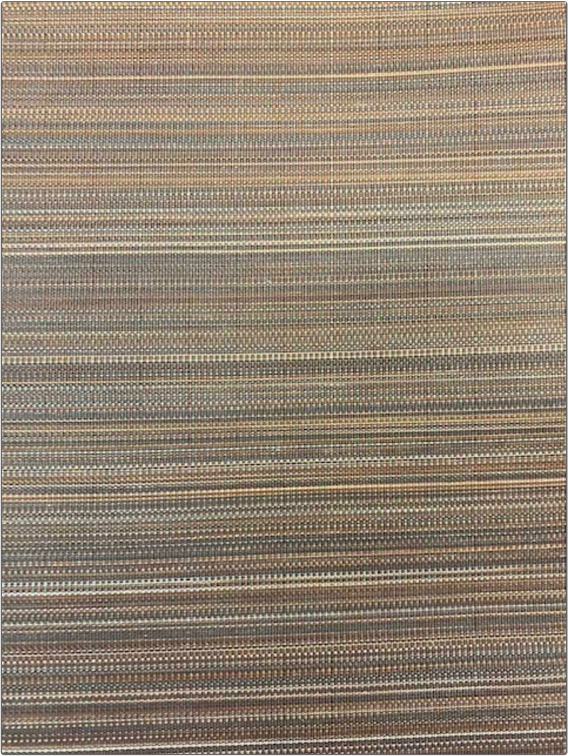


Product Details

PATTERN	Paso		
COLOR	Light / Grey		
BRAND	Clarence House		
USES	Upholstery		
BOOK	John Boyd		
DESIGN TYPES	Stripes		
RAILOADED	Not Railroaded		
APPLICATION	Fabric		
CATEGORIES	Wovens		
COLORS	Grey, Brown		
SCALE	Small		



WIDTH	VERTICAL REPEAT	HORIZONTAL REPEAT	CONTENT
25.00 in (63.50 cm)	0.00 in (0.00 cm)	0.00 in (0.00 cm)	68% Horsehair, 32% Cotton
BACKING	DOUBLE RUBS	PRODUCT NUMBER	DATE BOOKED
	Exceeds 50,000 Double Rubs	1745301	10/2023
COUNTRY	CLEANING CODES		
United Kingdom	S		

ADDITIONAL PRODUCT NOTES
Passes 50,000 Martindale Tst, Natural Fibers, Are Not Guaranteed For, Color Matching, Color, Fastness Or Durability.