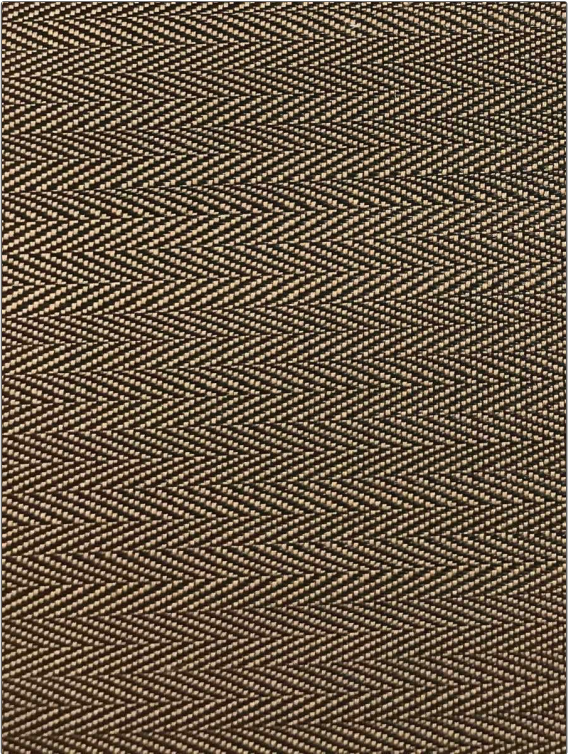


Product Details

PATTERN	Milzig Herringbone
COLOR	Brown / Black

BRAND	APPLICATION
Clarence House	Fabric
USES	CATEGORIES
Upholstery	Wovens
BOOK	COLORS
John Boyd	Black, Blue
DESIGN TYPES	SCALE
Herringbone	Small
RAILOADED	
Not Railroaded	



WIDTH	VERTICAL REPEAT	HORIZONTAL REPEAT	CONTENT
25.00 in (63.50 cm)	0.20 in (0.51 cm)	0.15 in (0.38 cm)	68% Horsehair, 32% Cotton
BACKING	DOUBLE RUBS	PRODUCT NUMBER	DATE BOOKED
	Exceeds 50,000 Double Rubs	1743802	10/2023
COUNTRY	CLEANING CODES		
United Kingdom	S		

ADDITIONAL PRODUCT NOTES
Passes 50,000 Martindale Tst, Natural Fibers, Are Not Guaranteed For, Color Matching, Color, Fastness Or Durability.