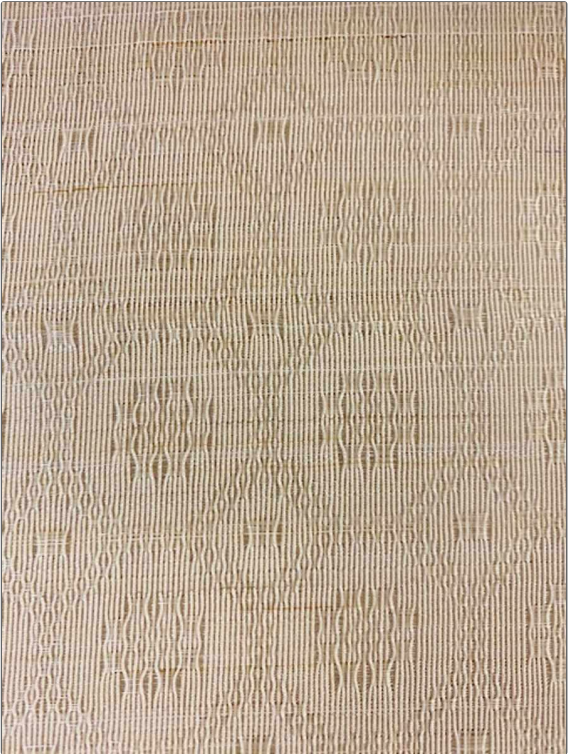


Product Details

PATTERN Holstein 2
COLOR Ivory

BRAND	APPLICATION
Clarence House	Fabric
USES	CATEGORIES
Upholstery	Wovens
BOOK	COLORS
John Boyd	Multi-Color
DESIGN TYPES	SCALE
Geometric, Diamond	Small
RAILROADED	
Not Railroaded	



WIDTH	VERTICAL REPEAT	HORIZONTAL REPEAT	CONTENT
22.00 in (55.88 cm)	1.40 in (3.56 cm)	1.40 in (3.56 cm)	68% Horsehair, 32% Cotton
BACKING	DOUBLE RUBS	PRODUCT NUMBER	DATE BOOKED
	Exceeds 50,000 Double Rubs	1741901	10/2023
COUNTRY	CLEANING CODES		
United Kingdom	S		

ADDITIONAL PRODUCT NOTES
 Passes 50,000 Martindale Tst, Natural Fibers, Are Not Guaranteed For, Color Matching, Color, Fastness Or Durability.