

## Product Details

**PATTERN** Prism Zag  
**COLOR** Glee On Latte

**BRAND**

Clarence House

**APPLICATION**

Trimming

**CATEGORIES**

Braids / Borders / Tape

**BOOK**

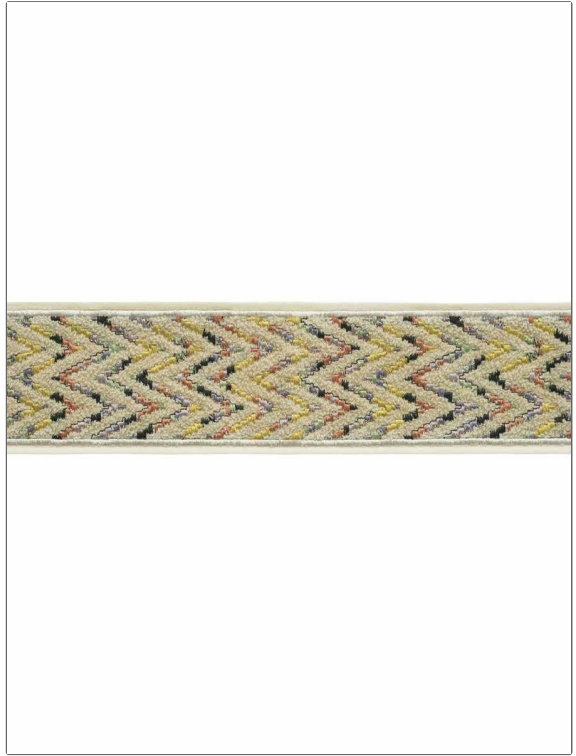
Indochine

**COLORS**

Taupe / Tan, Multi-Color

**DESIGN TYPES**

Flamestitch, Herringbone,  
Architectural, Chevron,  
Bargello



**WIDTH**

3.50 in (8.89 cm)

**VERTICAL REPEAT**

0.00 in (0.00 cm)

**HORIZONTAL REPEAT**

0.00 in (0.00 cm)

**CONTENT**

56% Acrylic, 28% Cotton,  
16% Viscose

**PRODUCT NUMBER**

1609203

**DATE BOOKED**

08/2023

**COUNTRY**

India

**ADDITIONAL PRODUCT NOTES**

Exclusive Pattern, Border / Braid / Tape, Embroidered Textiles Are Not, Guaranteed For Precise Color, Matching And Colorfastness., Color Placement Of Embroidery, May Vary. All Measurements, Quoted For Repeats Are, Approximate., Width: 3.50 In