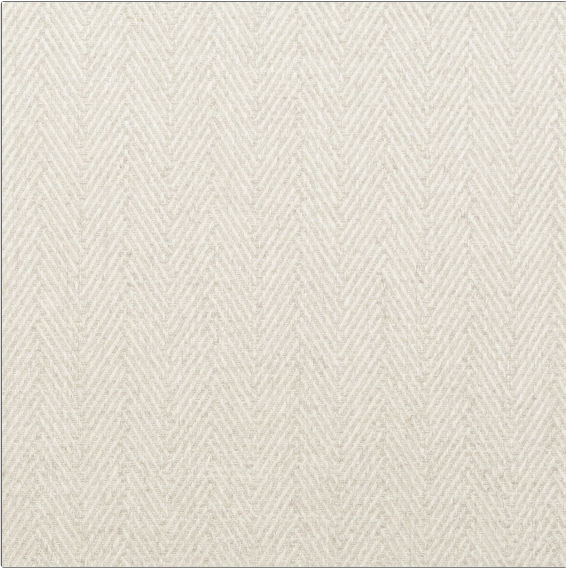


Product Details

PATTERN	Lindsay
COLOR	Oyster

BRAND	APPLICATION
Clarence House	Fabric
USES	CATEGORIES
Drapery, Multipurpose, Upholstery	Textures, Wovens
COLORS	DESIGN TYPES
Off White / Ivory	Herringbone
SCALE	RAILROADED
Small	Not Railroaded



WIDTH	VERTICAL REPEAT	HORIZONTAL REPEAT	CONTENT
54.00 in (137.16 cm)	0.00 in (0.00 cm)	1.75 in (4.44 cm)	47% Viscose, 23% Linen, 19% Cotton, 11% Polyester
BACKING	DOUBLE RUBS	PRODUCT NUMBER	COUNTRY
	Exceeds 20,000 Double Rubs	1537902	Italy

ADDITIONAL PRODUCT NOTES
Passes 20,000 Martindale Tst, Dry Clean Only